



# ***HUNTER ENGINEERING***

## Company Profile

Member of:





Dear Valued Customer,

Thank you very much in allowing us to introduce **Hunter Engineering (M) Sdn. Bhd** to your esteemed organization.

**Hunter Engineering (M) Sdn. Bhd** was set up by a group of experienced personnel who has been in the F&B industry for the last decade, providing support for the stewarding, housekeeping, kitchen and engineering department for the hospitality, catering, supermarket and mining camps which require high standards of services.

**Hunter Engineering (M) Sdn. Bhd** is committed to providing high quality products and services by meeting or exceeding the needs of our customers. Our company will supply and service all hospitality, catering, commercial and residential requirements which is designated to deliver value and prevent deficiencies in quality.

**Our Policy** is to be the premier supply and service company that provides nationwide products and services to our customers in the hospitality, catering, commercial and residential industries. Integration of motivated people, quality products and services, with particular focus on a technically demanding environment.

**Hunter Engineering (M) Sdn. Bhd** also recognizes that almost seventy percent of kitchen fire is associated to the exhaust system in the industry. In our support towards minimizing kitchen fire, we have a team of technical support engineers and fully trained staff to back up our department as personnel of our company are certified kitchen exhaust inspectors (CESI) and certified kitchen exhaust cleaners (CECS) of **IKECA** (International Kitchen Exhaust Cleaning Association.) Services carried out by our company is fully insured up to RM 1,000,000.00 in public liability insurance.

We are pleased to attach the project references of our company for your kind attention and reading. We look forward to be of service to you in the near future and assure you of our keenest attention always.



## Personnel Support.

### **Leonard Park (Director) BTH, CECS, CESI**

- Graduated Hotel Catering Instructional Management Centre (HCIMC) now known as Taylors School of Hospitality & Tourism.
- Kitchen consultant for setup and menu planning for various restaurants in Kuala Lumpur.
- Executive Chef for various establishments in South East Asia.
- Chefs Association of Malaysia committee member 2004-2008.
- Member of International Kitchen Exhaust Cleaning Association (IKECA)

### **Simon Yap (Technical Advisor) CECS, CESI**

- Graduated from Air Engineering Training Institute Singapore (Airframe/Engine).
- CV Indochem Sejahtera- Spearheaded exhaust system & kitchen cleaning business.
- PT Protekindo Sanita- Spearheaded exhaust system & kitchen cleaning and housekeeping cleaning division, provided and conducted training on housekeeping, stewarding and laundry in the hospitality industries in East Indonesia & Area Manager of Bali division.
- CV ASRI Business Technical Advisor for contract cleaning and maintenance and exhaust systems servicing and stone restoration and maintenance.
- Member of International Kitchen Exhaust Cleaning Association (IKECA).



## Personnel Support.

### **Tan Gim Teck (Director) BTH, CECS, CESI**

- Graduated Hotel Catering Instructional Management Centre (HCIMC) now known as Taylors School of Hospitality & Tourism.
- Kitchen consultant for designing, planning and supplying for various restaurants in Kuala Lumpur.
- Chef at various establishments.
- Member of International Kitchen Exhaust Cleaning Association (IKECA).

### **Ir Winyoto (Area Manager) CECS**

- Graduated from University of Surabaya (Degree in Industrial Engineering).
- PT. Protekindo Sanita- specializing in chemical engineering, ventilation system maintenance and water treatment.
- CV. Asri.- specializing in exhaust system maintenance, kitchen cleaning & sanitation maintenance and stone restoration and maintenance.

### **Kana Nedeson (Sales Manager)**

- Sales for Kuala Lumpur area.



## Associated companies

### **Bali.**

#### **Asri Indonesia, PT.**

Jl. Buana Kubu, Gang Asem VI / No. 9

Denpasar 80117

Bali - Indonesia

Phone: +62 361 485 849 / 742 1578

Fax: +62 361 485 040

email: [winyoto@asrionline.com](mailto:winyoto@asrionline.com)

Contact Person: Mr. Winyoto

### **Jakarta.**

#### **Asri, CV.**

Komplek Metro Permata I

Blok J 5/20

Tangerang

Jakarta 12720

Indonesia

email: [info@asrionline.com](mailto:info@asrionline.com)

Phone: +62 21 7310011

Fax: +62 21 7310329

Contact Person: Ms. Yungly Wong

### **Singapore.**

#### **ASRI SINGAPORE Pte. Ltd.**

340 C King George's Avenue

King George's Building

Singapore 208574

email: [simonyap@asrionline.com](mailto:simonyap@asrionline.com)

Phone: (65) 6292 1618

Fax: (65) 6296 9428

Contact Person: Mr. Simon Yap (+62 81 139 2733)

**PERTUBUHAN PERLINDUNGAN KEBAKARAN MALAYSIA  
MALAYSIAN FIRE PROTECTION ASSOCIATION**



**Certificate of Membership**

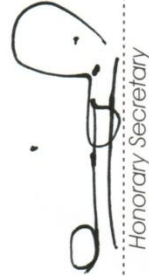
**HUNTER ENGINEERING (M) SDN BHD (M31610)**

has been accepted to be a member and will dedicate to  
protect mankind and the environment

valid until **31-12-2013**



President



Honorary Secretary





**HUNTER  
ENGINEERING**



*The International Kitchen Exhaust Cleaning Association*

*certifies*

**Tan Gim Teck**

*of*

**CV ASRI**

**As a Certified Exhaust Cleaning Specialist (CECS) who possesses and has demonstrated a comprehensive knowledge and thorough understanding of kitchen exhaust cleaning principles, kitchen exhaust fire safety, and applicable industry codes and standards.**

This certification number **CS10890-09** is fully recognized by the bylaws and policies and procedures of this professional organization. This certificate is renewable on an annual basis and expires on **11/08/2012**.



February 15, 2013

Leonard Park  
CV. ASRI  
Jl. Buana Kubu, Gang Asem VI No. 9  
Denpasar Bali 80117  
Indonesia

Dear Leonard,

Thank you for renewing your certification with IKECA. An official IKECA CECS Certificate is found at the end of this letter.

This certification program is intended to provide a useful credential for both the public interest and the profession. On behalf of the Board of Directors of IKECA, thank you for your participation.

Sincerely,

Lisa Chester  
Certification Director



100 North 20<sup>th</sup> Street ♦ Suite 400 ♦ Philadelphia, PA 19103 ♦ phone: 215.564.3484 ♦ fax: 215.963.9785 ♦ www.ikeca.or





## Products & Services

### **Exhaust Cleaning Service.**

**Where's there smoke there's fire.**

Each year, 11,200 structure fires are reported by eating and drinking establishments, resulting in an average of \$164.4 million in direct property damage.\* Half of these fires originate in the cooking area, which can then explode into the exhaust system. Keeping a grease-free and fire-safe kitchen exhaust system can protect restaurants from fire damage.

Regularly maintaining the kitchen exhaust system will ensure a secure environment for cooking. A system that is safely working at peak performance will ultimately lead to a working environment that's cleaner, cooler and more productive for the staff.

Since 2003 Hunter Engineering, backed by our technical advisor with 20 years experience in exhaust cleaning, has built a reputation for providing its customers fire-safe kitchen exhaust systems. We clearly understand the importance of a properly maintained kitchen exhaust system and what it means to your business. We also help make sure you're always in compliance with the latest industry regulations. As a certified member in excellent standing with the International Kitchen Exhaust Cleaning Association, you can rest assured that we are more than qualified for the job.

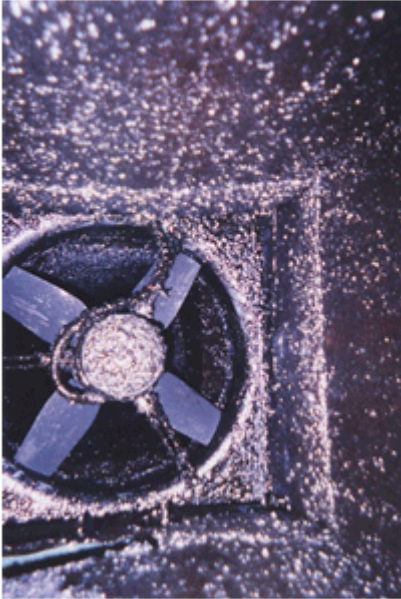
#### **Action Speaks Louder Than Words.**

The Hunter recipe for success combines dedicated cleaning staff, chemicals and proven techniques. This ensures that your entire system is thoroughly cleaned top to bottom:

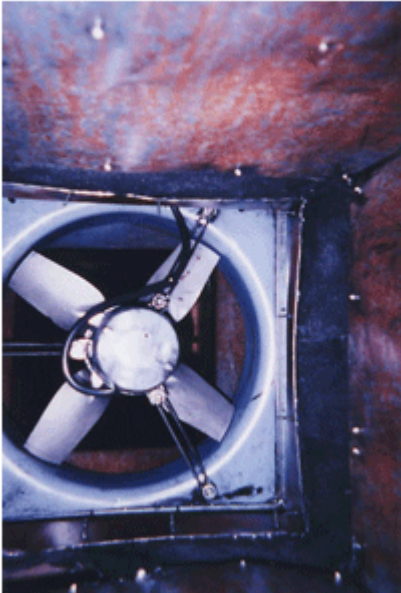
- Exhaust hoods
- Horizontal and vertical ductwork
- Rooftop, centrifugal and all types of exhaust fans

All Hunter service associates participate in a comprehensive training program that provides the skills needed to get the job done right. Our experienced staff is focused on safety and efficiency, ensuring a job well done. Each cleaning service is completed thoroughly and with minimal disruption to your business. Qualified Hunter supervisors oversee each project to make sure it goes according to plan, inspecting the entire cleaning effort for quality and completeness.

**Before**



**After**



- ✓ Reduced risk of kitchen fires
- ✓ Enhanced working environment for staff
- ✓ Improved ventilation for smoke and odor removal.
- ✓ Lower insurance premiums offered by some insurance companies
- ✓ Compliance with local and national fire health codes.





## Kitchen Exhaust Project References.

### **Exhaust Cleaning Projects.**

#### **Hotels**

- ❖ Mandarin Oriental KL
- ❖ Klana Resort Seremban
- ❖ Berjaya Times Square Hotel & Convention Centre
- ❖ Holiday Inn Glenmarie
- ❖ First Business Inn
- ❖ Grand Millennium Kuala Lumpur
- ❖ Club Med Cherating
- ❖ Equatorial Bangi
- ❖ Traders Kuala Lumpur
- ❖ De Palma Kuala Selangor
- ❖ Dorsett Regency KL
- ❖ Intercontinental KL
- ❖ Lanson's Place
- ❖ Prince Hotel
- ❖ Nouvelle/Mint Hotel
- ❖ DoubleTree by Hilton Group
- ❖ Colmar Tropicale
- ❖ Impiana KLCC
- ❖ Rebak Island Resort Langkawi
- ❖ Darby Park Hotel
- ❖ Micasa All Suite Hotel KL
- ❖ Ritz Carlton KL
- ❖ The Residence At Ritz Carlton KL

#### **Industrial/Hospital Canteens & Canteens**

- ❖ Epsom Toyocom Malaysia Sdn Bhd
- ❖ Mulpha International Berhad Canteen
- ❖ Sunway Medical Hospital
- ❖ Assunta Hospital
- ❖ Glenmarie Golf & Country Club
- ❖ Kota Permai Golf Club
- ❖ Kelab Golf Perkhidmatan Awam KL
- ❖ Nilai Springs Golf & Country Club
- ❖ Perpustakaan Negara Canteen
- ❖ Medan Selera Putrajaya



- ❖ Bangunan KPKK Food Court Putrajaya
- ❖ MINDEF (Ampang)
- ❖ Sin Chew Jit Poh
- ❖ Ambank Food Court Jalan Yap Kuan Seng
- ❖ PJ Trade Centre Food Court
- ❖ Hospital Kangar
- ❖ Lanai Kijang & Sasana Kijang
- ❖ Bank Negara Malaysia
- ❖ Klana Resort Seremban

### **Shopping Complexes/Hypermarkets**

- ❖ Carrefour Stores
- ❖ Tesco (West Malaysia)
- ❖ Alamanda Putrajaya
- ❖ Sunway Pyramid
- ❖ South City Plaza
- ❖ Sooka Central

### **Restaurants / Cafe & Entertainment Outlets**

- ❖ TGIF
- ❖ Italiannies
- ❖ The Apartment (KLCC, The Curve)
- ❖ Teh Tarik Place
- ❖ Chili's Grill & Bar (Bangsar, Penang)
- ❖ Spaghetti Grill (Midvalley)
- ❖ House of Sudanese (KLCC, Johor Baru)
- ❖ Red Box (Malaysia)
- ❖ Green Box (Malaysia)
- ❖ Neway (Puchong, Sunway)
- ❖ Star KTV Bangsar
- ❖ Song Bird KTV Petaling Jaya
- ❖ The Mahattan Fish Market (West Malaysia)
- ❖ Sushi King Group (West Malaysia)
- ❖ Madam Lim's Cafe
- ❖ Jack's Place
- ❖ Jake's Charbroil (Damansara Heights)
- ❖ Market Food Street (Genting Highlands)
- ❖ Only Mee Group
- ❖ Curry House First World Genting
- ❖ Hot Pot First World Genting
- ❖ Monte's
- ❖ Tony Roma's Restaurant (West Malaysia)



- ❖ Tokyo G (Sunway, One Utama)
- ❖ Sanck It (KLCC)
- ❖ La Bodega (Bangsar, KL, Pavilion, BSC)
- ❖ Tewali Street Bistro (Bangsar)
- ❖ December (Mont Kiara)
- ❖ Clear Lounge (Mont Kiara)
- ❖ Magic Wok (Damansara Utama)
- ❖ Capristano Wisma MAA
- ❖ Marche (The Curve)
- ❖ Mahattan Cafe Berjaya Plaza
- ❖ Planet Hollywood Kuala Lumpur
- ❖ My Mix Cafe
- ❖ Dragon i (Sunway, Midvalley, One Utama, Queensbay, The Curve, Cheras Leisure mall, Centerpoint Bandar Utama, Bukit Tinggi)
- ❖ Canton i (Gardens, Queensbaymall)
- ❖ Cantonfare
- ❖ Genesis BBQ
- ❖ Michaelangelo (Pavilion, Solaris, Sunway)
- ❖ Xian Ding Wei (Sunway Pyramid)
- ❖ Glitters GSC Cinema (One Utama, Pavilion, Gardens)
- ❖ 7AteNine Ascott
- ❖ Skylounge Ascott
- ❖ Hard Rock Cafe Kuala Lumpur
- ❖ Harrod's (KLCC)
- ❖ Wasabi (Mandarin Oriental)
- ❖ Thai Xpress (The Curve, Pavilion)
- ❖ California Pizza Kitchen (KLCC)
- ❖ Tarbush (Sunway)
- ❖ Outback BB Park
- ❖ Dataran Maybank Foodcourt (Bangsar)
- ❖ Dreambox (Melaka)
- ❖ Popey's (Group)
- ❖ Rakuzen (Group)
- ❖ Pasta Zamaï (Group)
- ❖ Sushi Zamaï (Group)
- ❖ Sakae Sushi (Group)
- ❖ Emperor Garden Goldhill
- ❖ Burger King (KLIA)
- ❖ Lerk Thai (Malaysia)
- ❖ Ole Ole Bali KL
- ❖ Chicago Rib (Penang)
- ❖ Bumbu Bali
- ❖ SoulEd Out Hartamas





- ❖ WIP
- ❖ Alexis
- ❖ Hokkaido
- ❖ Wasabi Bistro
- ❖ Chatter Box HK (One Utama, Bangsar)
- ❖ Sushi Tei (Pavilion, Tropicana Mall, Mid Valley)
- ❖ Millesime
- ❖ Havana Restaurant
- ❖ Bens (KLCC, Pavilion, Publika)
- ❖ Bens General Food Store (Bangsar Village 2)
- ❖ Big Supermarket
- ❖ Bistro 42 (Bangsar Village 2)
- ❖ Canoodling (Bangsar Village 2)
- ❖ Plan B (Publika, Bangsar Village 2)
- ❖ Swine
- ❖ Estate (Intermark)
- ❖ Fong Lye Taiwan Restaurant (Mid Valley)
- ❖ Las Carretas Taipan (Subang Jaya, Damansara)
- ❖ Silverspoon
- ❖ Pu Tien (1 Utama)
- ❖ Brussels (Sunway Pyramid, Ampang, Jaya One)
- ❖ Papparich Citta Mall
- ❖ Chinoz On The Park (KLCC)
- ❖ Watami Japanese Casual Restaurant (Pavilion)
- ❖ Kluang Station (One Utama)
- ❖ Old Town (Summit USJ)
- ❖ Royal Selangor Club (Dataran, Annexe)
- ❖ 21 Kitchen (Bukit Bintang)
- ❖ Sushi Tei (Tropicana Mall, Penang)
- ❖ G3 Bangsar
- ❖ Takumi (Subang)
- ❖ Outback Restaurants (Bukit Bintang)
- ❖ U Village Café (Sungei Wang)
- ❖ Din Tai Fung (Empire Subang, E@Curve, Pavilion, The Gardens)
- ❖ Frontera (Jaya One)
- ❖ O'Viet Vietnamese Cuisine (Sunway Pyramid)
- ❖ Teppanyaki (Sunway Pyramid)
- ❖ Neway (One Utama)
- ❖ U Village (U Sungei Wang Plaza)
- ❖ Grand Nature (Bandar Manjalara)
- ❖ Barry Calebaut (Port Klang)
- ❖ Brotzeit (Sunway Pyramid)



Magiglide sliders are the “original sliding pads” manufactured in France since 1986. They have been designed to equip most type of furniture base and help to move them effortlessly around on indoor smooth floors and avoid marks and scratches during motion. Magiglide are the only sliding pads present in both professional and retail markets.

What are Magiglide sliding pads?

A pad placed under furniture to enable people to move furnishings effortlessly on all types of smooth flooring i.e. carpet, wood, marble, tiles. It protects the floor from scratches and markings.

Our factory (L’Estomer ITC) is ISO 9002 registered and Qualifas certified. I.T.C Elastomer has been used in some of the most demanding environments in the world, including aerospace, aeronautic, Formula 1 racing and petrochemical industries to name a few.

Magiglide is the only sliding pad used and recognised by professionals.

Hospitality industries use this product for:

- Cost saving.
  - Reducing scratches and mark on floorings.
    - ✓ Reduce maintenance and renovation on floors.
    - ✓ Decrease budget allocated for cleaning, maintaining and renovating floors by more than 40% on average.
  - Protect furniture base.
    - ✓ Reduce drastically vibration and friction during movement of furniture, engineering department spends less money on repairing damage furniture during operational task.
- Time saving
  - Fewer staff needed for moving furniture, cleaning and maintenance.
- Enhance customer satisfaction.
  - Improve hygiene everywhere.
  - Furniture will be easier to move for customers.
  - Reduce noise pollution when furniture is moved.



Magiglide Range





The Optipura™ is a versatile, portable air treatment device designed for enclosed places with high contamination odour level.

Utilizing high energy light based technology, Optipura™ emulates natural processes to breakdown chemical and biological contaminants using germicidal ultraviolet light and exciting air molecules to highly energized states also referred to as plasma. These plasmas are released into their applied environment and continue to accelerate the breakdown of organic contaminants present.

Because plasmas eventually revert to their original state and since no chemicals are used, no residues are left behind after they have done their work.

- Application Areas.
  - Hotel Housekeeping.
  - Smoking Rooms.
  - Restaurants.
  - Kitchen.
  - Central Air Conditioning.
  - Automotive & Marine time.

❖ Benefits.

Promotes more safer, comfortable places by;

- Odour Control.
  - ✓ Breaks down excessive, unwanted, lingering odours.
- Hygiene Improvement.
  - ✓ Lowers airborne and surfaced microbial count.
- Hazardous Gas Reduction
  - ✓ Volatile Organic Compound (alcohol, solvent, formaldehyde, etc).
  - ✓ Non organic gasses.
- Other Advantages.
  - ✓ Versatile Power Settings.
  - ✓ Low Maintenance.
  - ✓ No chemical, no residue.



**HUNTER  
ENGINEERING**

*Deodorize, Sanitize, Purify.*

 **OPTIPURA™**



 **OPTIPURA™**







# HUNTER ENGINEERING

ORIGINAL



## ORIGINAL KEY-BAK® SELF RETRACTING REEL



If your job requires the frequent use of keys and/or small items; you need the extreme durability and strength of KEY-BAK® original series. Offering alternative back attachments for personal use; the stainless steel chain or Kevlar® cord extends for reach and retracts automatically so your items stay secure with you.

- Light weight, pocket size, about 2.5 oz. (71 gm) weight
- Small size, about 2" (5 cm) case diameter
- 24" Stainless Steel Chain
- 48" Kevlar® cord allows for additional reach and smoother action
- 36" Kevlar® cord offers additional retraction force

Available with custom logo, inquire.

Precision made for years of trouble free use. Backed up by a Lifetime Service Policy



## 24" STAINLESS STEEL CHAIN

### Original KEY-BAK® #5

24" Stainless Steel Chain 8-10 oz

- Small swivel and 1½" split ring
- Chrome Front
- Belt Clip

Item #0005-002 BULK  
Item #0005-011 PAC



Belt Clip

### #5H

24" Stainless Steel Chain 8-10 oz

- Small swivel and 1½" split ring
- Chrome Front
- Belt Clip
- Incorporates HUS-KEY™; allowing the use of more keys and/or tools (see page 11)

Item #0005-102 BULK  
Item #0005-101 PAC



### #5S

24" Stainless Steel Chain 8-10 oz

- Small swivel and 1½" split ring
- Chrome Front
- Belt Clip
- Additional extra 12" of chain allows placing keys in pockets; for added security

Item #0005-900 BULK



### #5SK

24" Stainless Steel Chain 8-10 oz

- Small swivel and 1½" split ring
- Chrome Front
- Belt Clip
- Specially packed to promote its use as a tool holder

Item #0005-005 Striker/Tool Reel



\*Striker Not Included

### #5B

24" Stainless Steel Chain 8-10 oz

- Small swivel and 1½" split ring
- Black Vinyl Front
- Belt Clip

Item #0005-004 BULK  
Item #0005-013 PAC



### #5BH

24" Stainless Steel Chain 8-10 oz

- Small swivel and 1½" split ring
- Black Vinyl Front
- Belt Clip
- Incorporates HUS-KEY™; allowing the use of more keys and/or tools (see page 11)

Item #0005-104 BULK  
Item #0005-103 PAC



### #5BS

24" Stainless Steel Chain 8-10 oz

- Small swivel and 1½" split ring
- Black Vinyl Front
- Belt Clip
- Additional extra 12" of chain allows placing keys in pockets; for added security

Item #0005-905 BULK  
Item #0005-906 PAC



03



## Twin Beds Or A King? Now You Have A Choice

Offer versatile sleeping accommodations by quickly and easily joining two independent twin beds into one. With the CKI line of Bed Doublers, your guests can enjoy seamless comfort that is spacious, comfortable and secure.

The center poly-sheepskin pads the middle where the beds join together while strong belts wrap around the sides of the mattress to safely secure the two beds together.

Our Bed Doubler products are non-allergenic, easy to care for, and machine washable. This durable, lightweight bedding accessory is made in the USA and offers true room flexibility at last.



### CREATE A KING™

Fits all twin mattresses 75" to 80" long. The 8" wide sheepskin (100% polyester) pads the center area. Adjustable 2" side belt holds mattresses securely together.

### HOSPITALITY PLUSH™

Designed specifically for more plush or pillow-top twin mattresses whose middle requires extra padding where beds join. Top sheepskin is 12" wide with 4" wide belts that fasten with Velcro®. Filler pad is removable. Length adjusts up to 80".



**FORBES™**  
Industries Asia

Forbes Industries Asia Pte Ltd  
100, Beach Road, #28-05,  
Shaw Tower, Singapore 189702  
T: 6295 2262 F: 6295 2022  
enquiry@forbes-asia.com.sg  
www.forbes-asia.com.sg  
Co Reg No: 200722921Z





## HUNTER ENGINEERING



**SLEEP Defender™**

### ABSOLUTE PROTECTION FOR ABSOLUTELY EVERYTHING

Get absolute protection from liquids, stains, mildew, molds, allergens, viruses, dust mites and bed bugs with the Sleep Defender™ line of encasements. All Sleep Defenders feature luxury, breathable materials that ensure a quiet, cool, healthy night's rest for your guests. CKI encasements are designed to be lightweight and compact for easy storage and increased washing/drying capacity. They are also backed with high temperature polyurethane barrier to withstand industrial washing/drying and are guaranteed by the industry's longest, leading warranty, Made in the USA, Sleep Defenders are available in all standard sizes including sofa sleepers and roll away beds and can be custom sized to fit any mattress, box spring or pillow.



#### MATTRESS ENCASEMENTS

- o 100% Satin Poly
- o Zipper enclosure
- o Waterproof, perspiration & stain proof
- o Proven protection against allergens, molds, mildew, dust mites and bed bugs
- o Stops viral/bacterial penetration
- o Backed with a high-temp polyurethane
- o Leading Warranty (300 washings/dryings)
- o Made for all mattresses including sofa sleepers and roll away beds

#### PILLOW ENCASEMENTS

- o High quality T-180 thread count in a 55% cotton/45% polyester material
- o Zipper enclosure
- o Waterproof, perspiration & stain proof
- o Proven protection against allergens, molds, mildew, dust mites & bed bugs
- o Stops viral/bacterial penetration
- o Backed with a high-temp polyurethane
- o Leading Warranty (300 washings)
- o Accommodates gusseted pillows

#### BOX SPRING ENCASEMENTS

- o Non-woven (polyethylene)
- o Zipper enclosure
- o Repels liquids and stains
- o Proven protection against allergens, molds, mildew, dust mites & bed bugs

**FORBES™**  
**Industries Asia**

**Forbes Industries Asia Pte Ltd**  
100, Beach Road, #28-05,  
Shaw Tower, Singapore 189702  
T: 6295 2262 F: 6295 2022  
enquiry@forbes-asia.com.sg  
www.forbes-asia.com.sg  
Co Reg No: 200722921Z



As Luxurious As Down With  
Far Better Resiliency

**Sleep Defender Mattress Topper  
Regency Collection**

**Advanced Cluster Fiber Luxury Combined With  
Exceptional Mattress Protection**

The Sleep Defender® Regency Collection consists of mattress toppers generously filled with a unique polyester fiber gathered in small clusters to provide an extraordinary level of heavenly comfort. The topper is lined with a breathable, polyurethane film to prevent contaminants from reaching the mattress.

**Sleep Defender® Mattress Topper**

Choose 3 Inch or 6 Inch Deep Miracle Cluster Fiber Pile

**Made In the USA**

Get the look and feel of down, with better features:

- 100% hypo allergenic
- waterproof and stain proof
- machine wash and dry

Our unique, signature process called “chain stitch, multi-needle, continuous closed pattern” provides a resiliency that lasts for years with plump clusters that do not move or lose their shape or support over time.

Chain stitch sewing ensures topper fill never clumps or shifts.



Product	SKU #	Weight	Size	Cube	Case/ QTY
<b>3" Toppers</b>					
Twin Regency	86339	7 lbs	23 x 20 x 10	2.7	1
Twin XL Regency	86380	7 lbs	23 x 20 x 10	2.7	1
Full Regency	86354	8 lbs	23 x 20 x 10	2.7	1
Full XL Regency	86359	8 lbs	23 x 20 x 10	2.7	1
Queen Regency	86360	9 lbs	23 x 20 x 10	2.7	1
King Regency	86378	10 lbs	23 x 20 x 10	2.7	1
Cal King Regency	86372	10 lbs	23 x 20 x 10	2.7	1
<b>6" Toppers</b>					
Twin Regency	86639	14 lbs	23 x 20 x 10	2.7	1
Twin XL Regency	86680	14 lbs	23 x 20 x 10	2.7	1
Full Regency	86654	16 lbs	23 x 20 x 10	2.7	1
Full XL Regency	86659	16 lbs	23 x 20 x 10	2.7	1
Queen Regency	86660	18 lbs	30 x 22 x 18	6.9	1
King Regency	86678	20 lbs	30 x 22 x 18	6.9	1
Cal King Regency	86372	10 lbs	30 x 22 x 18	6.9	1

Fits deep mattresses up to 16". The Sleep Defender® Regency Collection is made in the USA and comes with a three year limited warranty.

Washable, 200TC, 100% cotton cover.

888.222.2217 • [www.CkiSolutions.US](http://www.CkiSolutions.US)





**HUNTER  
ENGINEERING**

## BELLMAN'S EQUIPMENT



610 mm



1118 mm

1910 mm

### **1-FO-2425 PB BIRDCAGE LUGGAGE CART**

**Description**  
Polished Solid Brass Superstructure,  
2 Push Bars, 8" Pneumatic Wheels

**Finish**  
Polished Brass



610 mm



1118 mm

1910 mm

### **1-FO-2525 PS BIRDCAGE LUGGAGE CART**

**Description**  
Polished Stainless Steel Superstructure,  
2 Push Bars, 8" Black Pneumatic Wheels

**Finish**  
Polished Stainless Steel



**CHOICE OF COLOURS**

**BUMPER COLOURS**



BEIGE



BLACK



**CARPET COLOURS**



RED



BURGUNDY



BLACK



GREY

**WHEELS**



**1635 - WB**  
8" BLACK  
Pneumatic Wheel

**Finish**  
Brass Plated



**1635 - WC**  
8" BLACK  
Pneumatic Wheel

**Finish**  
Chrome Plated



**1641 - W**  
8" CUSHION  
Grey Wheel



**1660 - WB**  
10" BLACK  
Pneumatic Wheel

**Finish**  
Brass Plated



**1660 - WC**  
10" BLACK  
Pneumatic Wheel

**Finish**  
Chrome Plated



**1-FO-1570 PB  
BELLMAN'S HANDTRUCK**

**Description**

Polished Brass, "Hoop Leg Design",  
Wrap-around Carpet Kit, Fold Up Dropnose,  
10" black Pneumatic Wheels

**Finish**

Polished Brass

For Polished Stainless Steel Version,  
Order Model 1-FO-1570-PS (See Front Cover)

DISCLAIMER: DESCRIPTIONS AND MEASUREMENTS ARE ACCURATE AT TIME OF PRINT. MEASUREMENTS ARE APPROXIMATED AND ACTUAL PRODUCTS MAY VARY SLIGHTLY FROM ACTUAL SPECIFICATIONS. FORBES ASIA RESERVES THE RIGHT TO CHANGE ANY ASPECTS OF SPECIFICATION AT ANY TIME AS DEEMED FIT.



## HUNTER ENGINEERING



1000 mm



500 mm



1042 mm



610 mm

### 1-FO-2548 PS LUGGAGE CART

**Description**

Polished Stainless Steel Superstructure, 4 Retaining Bars, Carpeted Deck, 8" Cushion Grey Wheels

**Finish**

Polished Stainless Steel

For Brass Version,  
Order Model 1-FO-2548-PB

### 1-FO-2575 PS LUGGAGE PLATFORM TRUCK

**Description**

2 Polished Stainless Steel Handles, 4 Vertical Retaining Bars, Carpeted Deck, Full Wrap-around Bumper, 8" Cushion Grey Wheels

**Finish**

Polished Stainless Steel

For Brass Version,  
Order Model, 1-FO-2575-PB